



# ENGINEERED FOR SPORT

SPARTAN

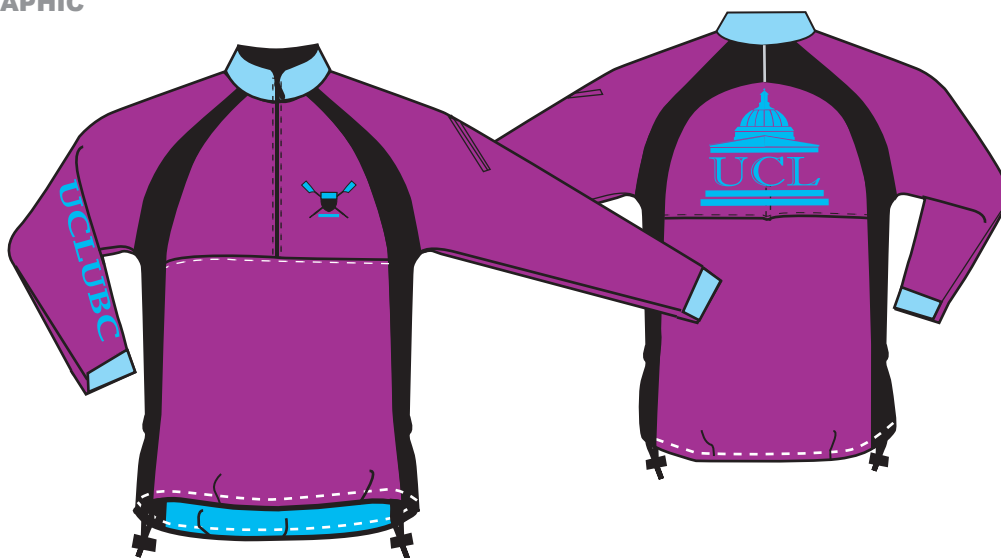
## GARMENT

Outerwear>Jackets>Fluid Jacket

## CONCEPT

- Performance-orientated 'hardshell' constructed specifically for high-intensity outdoor sports
- Multi-feature design suitable for all-round sporting activity [plus leisure / everyday use]
- Engineered to protect the upper body from the elements [wind > rain > cold] without 'overheating'
- Utilises the next generation of technical *stretch* waterproof fabrics [superseding the traditional gusseted shoulders] to allow unrestricted movement
- Works as an **outer** layer [designed to be worn in conjunction with a **base** and / or **mid** layer]

## GRAPHIC



## SPORTS



ROWING



HOCKEY



LACROSSE



NETBALL

## FABRIC TECHNOLOGY



Windproof



Waterproof



Breathable



**STRETCH**  
waterproof body panels

## CONSTRUCTION

- Anatomically-cut **slim fitting body profile** helping to prevent 'snagging' while still allowing limited layering underneath
- Windproof / waterproof / breathable **microfibre** outer shell offering an efficient and durable barrier against the elements
- **[NEW fabric for '07]** **STRETCH** waterproof contoured front / shoulder / back panels allowing maximum freedom of movement
- Full AIRTEX mesh lining [body and sleeves] allowing **4** season / year-round use by improving internal air circulation
- Comfortable / quick-drying / thermal **MICROfleece** collar lining
- Sculptured collar offering a snugger fit
- Seamless 'watershedding' shoulders providing maximum protection against the rain
- **[NEW for '07]** Long 24<30cm YKK® heavyweight technical *water-resistant* zips providing extra elemental protection
- Concealed back vents offering additional ventilation plus improved internal air circulation
- Extended sleeves resulting in a better fit when stretching forward at the catch
- Versatile *snap-shut* fully-adjustable 'storm' cuffs [with shaped Velcro® closures]
- Anatomically-cut differential hem with longer curved back [offering valuable protection to the vulnerable lumbar region] plus twin *shockcord* adjusters
- Useful 'wallet' pocket - positioned diagonally on left sleeve [for easy access] - with 14cm YKK® heavyweight technical *water-resistant* zip closure
- Durable twin-needle stitching helping to resist seam wear

## CUSTOMISING

Please contact your **Account Manager** for a copy of the relevant **Style Sheet** which gives you full details about the styles / colours / branding positions [embroidery / printing] etc. currently available